

# CG-500NPS-PEC

209 lb WLL

PIPE COUPLER 1/2" SCHED 40

Pipe Attachments



Pipe Coupler attached to Truss Clamp

The CG-500NPS-PEC pipe coupler adapts one half inch Sched 40 pipe under truss clamps and beam clamps and allows installers the option to suspend objects using half inch diameter pipe. .



Pipe Coupler attached to Beam Clamp

**StarGrid**<sup>®</sup>  
Compatible Component

## STANDARD FEATURES:

- ▶ Adapts half inch pipe to Truss and Beam Clamps

## OPTIONAL ACCESSORIES:

- ▶ MM-3RDX-18 Speaker Mount
- ▶ MM-010 Speaker Mount
- ▶ Safety Cables
- ▶ See Truss Clamp datasheets
- ▶ See Beam Clamp datasheets

## SPECIFICATIONS:

**Material:** Steel  
**Finish:** Powder Coat  
**Color:** Black  
**WLL:** 209 lb / 95 Kg

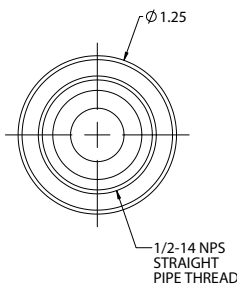
## PACKAGE CONTENTS:

**1pc** 1/2"-14NPS Pipe End Cap  
**1pc** 1/2"-13 x 1.5 Hexbolt  
**1pack** Hardware Kit

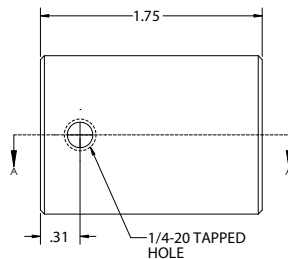


Rated for indoor use.

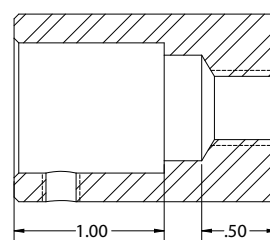
## DIMENSIONS:



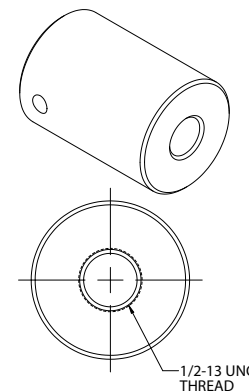
Top View



Side View



Internal View



**Adaptive Technologies Group**  
1635 E. Burnett Street | Signal Hill, CA 90755 USA  
Ph: 562.424.1100 | Fax: 562.424.3520  
www.adaptivetechnologiesgroup.com



## ALWAYS INSTALL SAFETY CABLES

**WARNING:** Mounting and/or suspension of equipment requires experienced professionals. Improperly installed equipment can result in property damage, personal injury and/or liability to the installing contractor.