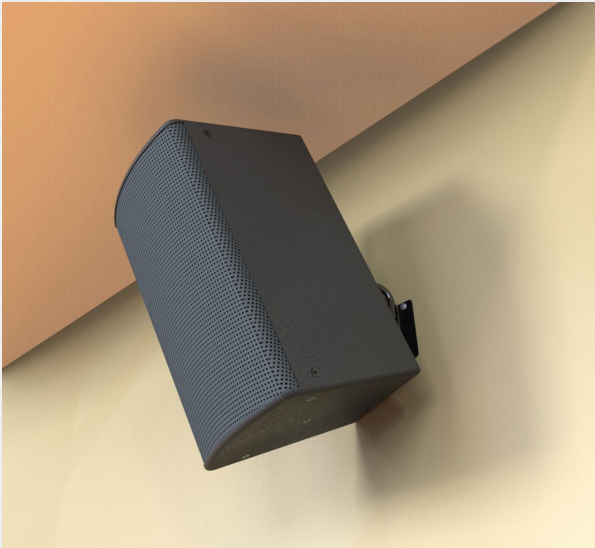


MM-023-BT

75 lb. WLL

SPEAKER VESA MOUNT WITH PAN AND TILT

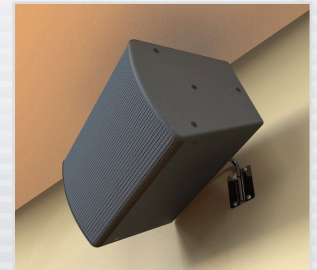
MULTIMOUNT®



This universal speaker mount supports loudspeakers with a 70, 90 and 100mm VESA mounting pattern, quickly attaching them to walls, overhangs, and other vertical structural members in either the portrait or landscape orientation.

Speakers weighing up to 75 lb. are independently adjusted and locked in almost any direction or angle through the use of independent pan and tilt adjustments. The MM-023-BT's unique support arm serves as a convenient carrying handle to lift speakers into place where they can be inserted into the wall mounting plate. Because the mounting plate supports the weight of the speaker, the installers hands are free to complete the wiring and positioning process.

Tilt adjustments are made at the side of the speaker adapter plate. Panning adjustments are made at the wall mounting plate.



STANDARD FEATURES:

- ▶ Independent, no drift, pan and tilt controls
- ▶ Infinite locking adjustments
- ▶ Single man speaker installations
- ▶ Accommodates 70, 90 and 100mm VESA mounting hole patterns

OPTIONAL ACCESSORIES:

- ▶ PM-010 pole adapter and band kits
- ▶ Safety cables (standard and custom lengths)

SPECIFICATIONS:

Materials: Structural Steel Alloy
Finish: Powder Coat
Color: Black
Tilt Rotation up to: 180° max.
Swivel Rotation up to: 140° max.
WLL: 75 lbs. (34.1 Kg) max.
Design Factor: 5:1
Pack Count: 1 unit/carton

PACKAGE CONTENTS:

- 1 pc** Mounting Plate
- 1 pc** Speaker Adapter
- 1 pc** Support Arm Assy
- 1 pc** Hardware Kit

DIMENSIONS:

