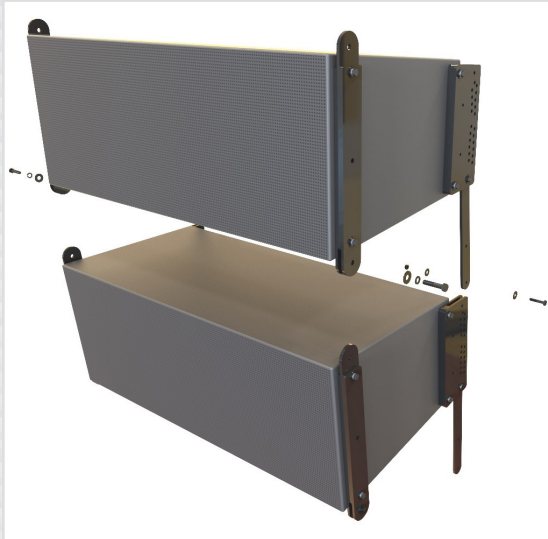


STRAP KIT RS-VLA-i-901-SK

3200 lb. WLL

FRONT AND REAR ADJUSTABLE SPEAKER STRAP KIT

RIGGING SYSTEM

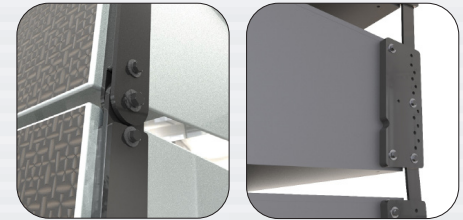


RS-VLA-i-901-SK STRAP KIT

Assemble JBL's VLA901i line array loudspeakers for desired coverage in the horizontal orientation, up to 11 cabinets in a row using Adaptive's adjustable interconnecting Strap Kits.

This relatively easy-to-assemble rigging kit comes with two pivoting connector straps that secure to the fly points of the front of the VLA901i speaker cabinets, which interlock into the front straps of the cabinet above and below it.

Two adjustable rear Strap Kits secure to the rear fly points of the speaker which allows the speaker cabinet to interlock with speakers above and below into their desired angles, from tight-pack out to 10 degrees and in 1° and 1/2° degree increments up to 9.5°.



Front Strap

Rear Strap

These Strap kits connect to the front and rear receptacles of the Top Grid, which provides a safe cluster rigging structure while allowing the entire cluster to be tilted up or down for precise sound coverage.

They will also connect with the RS-VLA-i-901-PB Pull Back assembly for when medium to very steep down tilt angles are required.

In addition, Strap Kits can interlock into the Step Bracket, which steps down from VLA601i to the VLA901i loudspeaker. This provides additional close-range coverage by allowing the VLA901i loudspeaker to be suspended under the VLA601i cabinet.

STANDARD FEATURES:

- ▶ Supports VLA901i Loudspeakers
- ▶ Secures to upper and lower speakers
- ▶ Supports Permanent Installations
- ▶ Adjusts in half-degree increments, up to 9.5°

OPTIONAL ACCESSORIES:

- ▶ See Top Grid RS-VLAI-6/901TG data sheet
- ▶ See Pull Back RS-VLAI-6/901PB data sheet
- ▶ See overhead hardware data sheet
- ▶ See wire rope data sheet
- ▶ See safety cable data sheet

SPECIFICATIONS:

Materials: Structural steel
Finish: Powder coat
Color: Black
Tilt Angle: 0-10° degrees
WLL: 3200 lb / 1455 Kg
Design Factor: 5:1

PACKAGE CONTENTS:

2 pcs. Front Straps and hardware
2 pcs. Rear Straps and hardware
2 pcs. Rear links and hardware

