

STEP KIT RS-VLA-i-901SB

3200 lb. WLL

VLA601i to VLA901i STEP BRACKET KIT

RIGGING SYSTEM

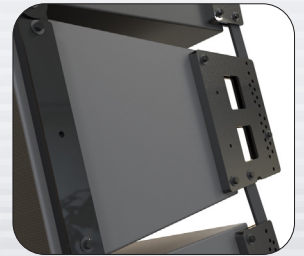


RS-VLA-i-901SB STEP BRACKET KIT

Use this precision manufactured adapter Strap Kit to step down from the longer VLA601i speaker cabinet to the shorter VLA901i speaker cabinet.

This adapter locks in just like the standard Strap Kits using the same interlocking features. Splay angles are also provided via the step bracket where VLA901i cabinets can be tight-packed up to the VLA601i cabinet or splayed out, up to 10 degrees.

Attaching the VLA901i cabinet underneath the VLA601i cabinet provides additional near field coverage.



STANDARD FEATURES:

- ▶ Bridges VLA901i speaker under the VLA601i speaker
- ▶ Supports VLA601i & VLA901i Loudspeakers
- ▶ Secures to upper and lower strap kits
- ▶ Supports Permanent Installations

OPTIONAL ACCESSORIES:

- ▶ See overhead hardware data sheet
- ▶ See wire rope data sheet

SPECIFICATIONS:

Materials: Structural steel
Finish: Powder coat
Color: Black
Tilt Angle: 10° degrees
WLL: 3200 lb / 1455 Kg
Design Factor: 5:1

PACKAGE CONTENTS:

2 pcs. Front Straps and hardware
2 pcs. Rear Straps and hardware
2 pcs. Rear links and hardware

