

PM-MOUNT-6UP

STAINLESS

ADAPTS SUPPORT ARM TO POLES 6" AND UP

PoleStar®



For 6"/154mm diameter and larger poles and columns, use the PM-Mount-6UP. This all-stainless adapter offers a natural finish and supports up to 300 lb./68 Kg, in a vertical load with a 5:1 design factor. It accommodates the PM Series Support Arm, Dual Adapter and includes hardware for their attachment.

There are four standard permanent band kits available in different lengths and are sold separately. Custom lengths are also available.



STANDARD FEATURES:

- ▶ Provides Mounting Surface for Multiple Items
- ▶ All stainless steel construction
- ▶ Load rated components
- ▶ Components use common hole patterns
- ▶ Cosmetic trim components included
- ▶ Job-site ready

OPTIONAL ACCESSORIES:

- ▶ See next page

SPECIFICATIONS:

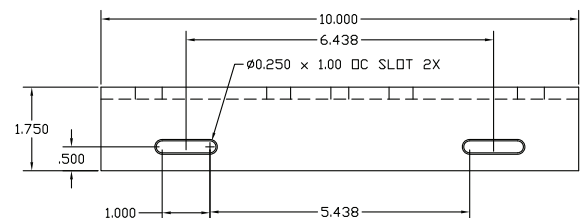
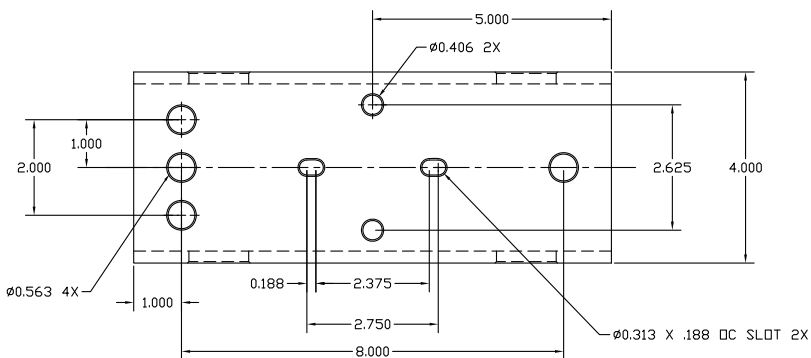
Material: Stainless Steel
Finish: Passivated
Color: Silver
WLL: 300 lb / 136.078
*WLL = Working Load Limit

PACKAGE CONTENTS:

1 pc Mount Bracket
1 pc Hardware kit.



Rated for outdoor use.



Adaptive Technologies Group
1635 E. Burnett Street | Signal Hill, CA 90755 USA
Ph: 562.424.1100 | Fax: 562.424.3520
www.adaptivetechologiesgroup.com



ALWAYS INSTALL SAFETY CABLES

WARNING: Mounting and/or suspension of audio and video equipment requires experienced professionals. Improperly installed loudspeakers can result in property damage, personal injury and/or liability to the installing contractor.

PM-MOUNT-6UP

STAINLESS

OPTIONAL ACCESSORIES

PoleStar®

BAND STRAP KITS:

Five different length permanent band kits are available in stock lengths including 20", 30", 60", 90" and 120". Choose from the section below. Each kit contains 2 assemblies. These kits, when used per instructions, will support the stated working load of the selected pole adapter.

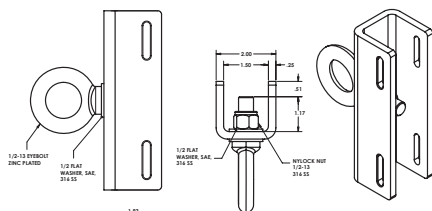
Model	Length	Width	Thickness	Max Pole Dia.	WLL	Weight
PM-Band-20S	20"/508mm	.50/13mm	.02 / 0.508mm	6"/152mm	150 / 68kg	.7 lb. / .32 kg
PM-SB-BAND-30	30"/762mm	.75/19mm	.03 / 0.762	6"/152mm	300 / 136kg	1.5 lb. / 0.7 kg
PM-SB-BAND-60	60"/1524mm	.75/19mm	.03 / 0.762	15"/381	300 / 136kg	2.0 lb. / 1.9 kg
PM-SB-BAND-90	90"/2286mm	.75/19mm	.03 / 0.762	25"/635mm	300 / 136kg	2.5 lb. / 1.1 kg
PM-SB-BAND-120	120"/3048mm	.75/19mm	.03 / 0.762	32"/813mm	300 / 136kg	3.0 lb. / 1.36 kg

SAFETY CABLES:

Model	Length (Loop to Loop) Inches/mm	Description QTY & Contents	MATL	Static WLL (lbs/kg)	Style
SC-188-18-SS	18"/450	3/16" Wire Rope 7X19 (2) 1/4" Shackle	SS	750/ 340	B
SC-188-24-SS	24"/610	3/16" Wire Rope 7X19 (2) 1/4" Shackle	SS	750/ 340	B
SC-188-30-SS	30"/762	3/16" Wire Rope 7X19 (2) 1/4" Shackle	SS	750/ 340	B
SC-188-48-SS	48"/1220	3/16" Wire Rope 7X19 (2) 1/4" Shackle	SS	750/ 340	B
SC-188-72-SS	72"/1830	3/16" Wire Rope 7X19 (2) 1/4" Shackle	SS	750/ 340	B
SC-188-96-SS	96"/2438	3/16" Wire Rope 7X19 (2) 1/4" Shackle	SS	750/ 340	B

SAFETY ANCHOR / PM-SAFETY-6DSS:

When the pole or column does not offer an adequate way to attach safety cables, specify the PM-Safety-6DSS and corresponding band kit. This mount provides a structural method for anchoring safety cables. It installs above the pole adapter and safety cables are then secured to the safety anchor and each loudspeaker, thus by-passing the pole adapter completely.



SUPPORT ARM / PM-SA-24:

The PM Series Support Arm is produced from rugged structural stainless steel in a natural finish and supports the stated working load of the selected pole adapter. Three different mounting holes allow for placement relative to the pole to allow clearance for tilt rotation. Decorative hole covers provide a finished look and hardware is included to secure Yoke and U-Bracket style mounts.

