

# Loc-n-Load<sup>®</sup>

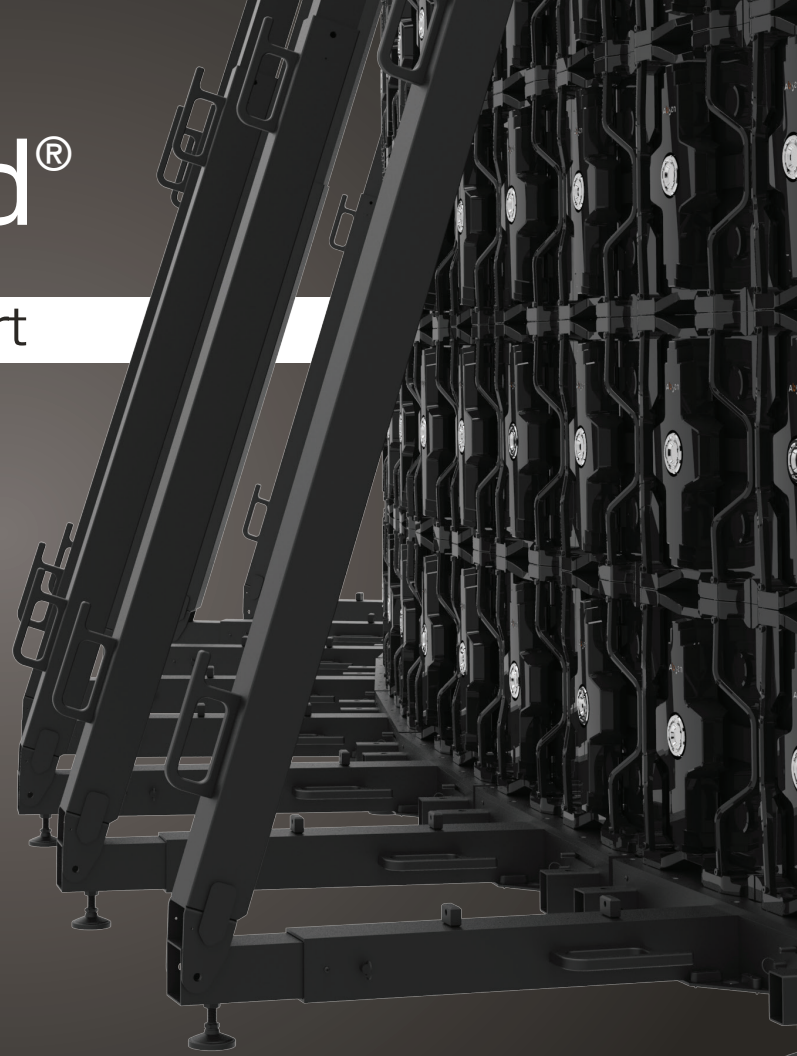
## Universal LED Ground Support

- Indoor-Outdoor Applications
- Curved and Straight Configurations
- Light-Weight All-Aluminum Materials
- Optional Rugged Cart

by:



**ADAPTIVE**  
TECHNOLOGIES GROUP



# Loc-N-Load<sup>®</sup> Accommodations

Build 16:9 video walls using a wide variety of 500 X 500 & 500 X 1000 Tiles

**Abgen**



CREATELED<sup>®</sup>

digiLED 



INFILED



ORACLE<sup>®</sup>

 PixelFLEX

SQUARE 



theatrixx

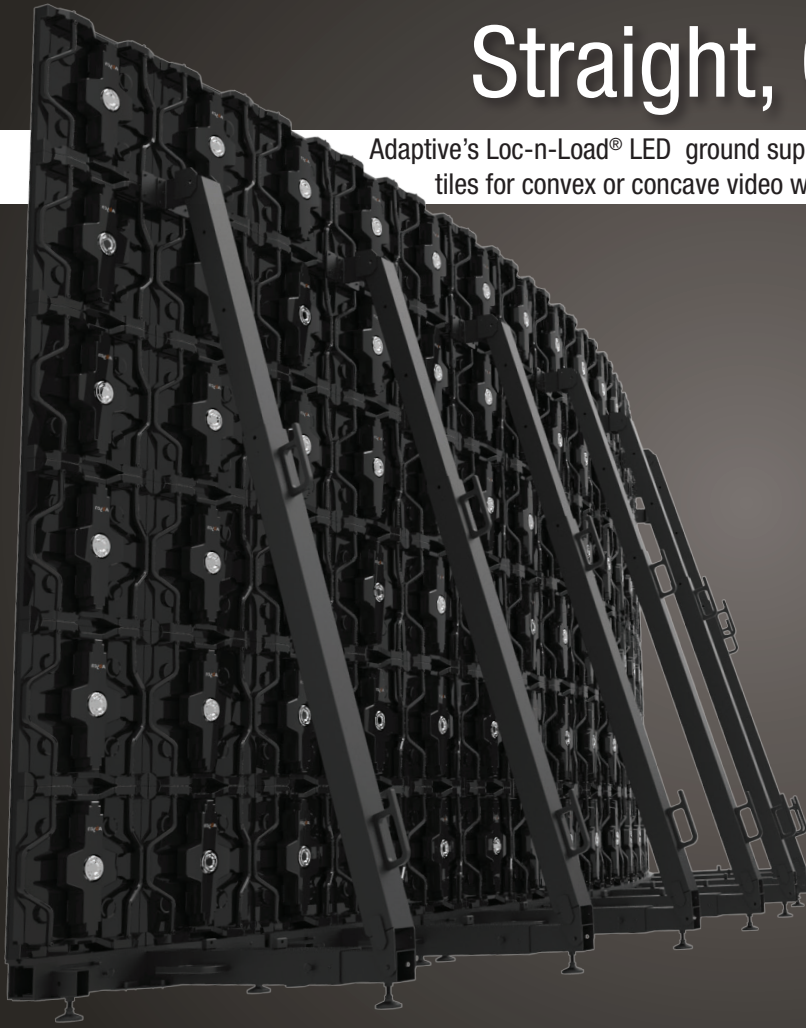


Unilumin



# Straight, Convex or Concave

Adaptive's Loc-n-Load® LED ground support system allows installers to choose between straight, every 2 tiles for convex or concave video wall configurations. Below are some curve compatible tile options.

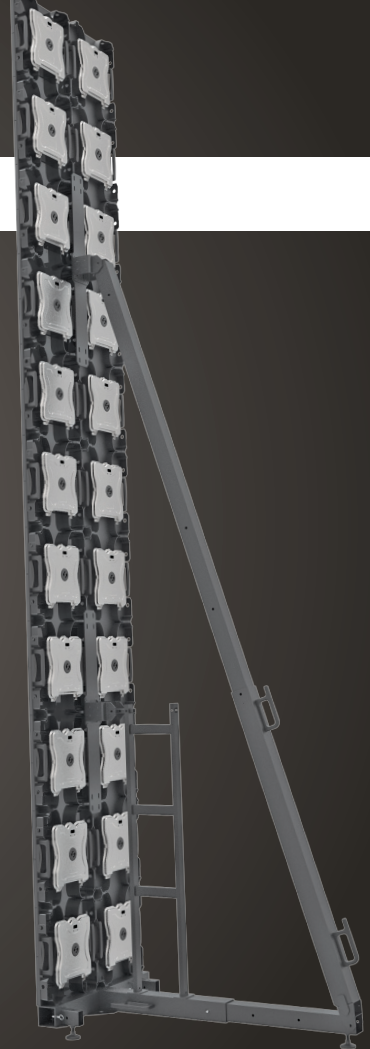


# One Cart Does it All

Adaptive's Loc-N-Load Cart carries all the components necessary to build up to a 16 X 9 tile LED Video Wall.

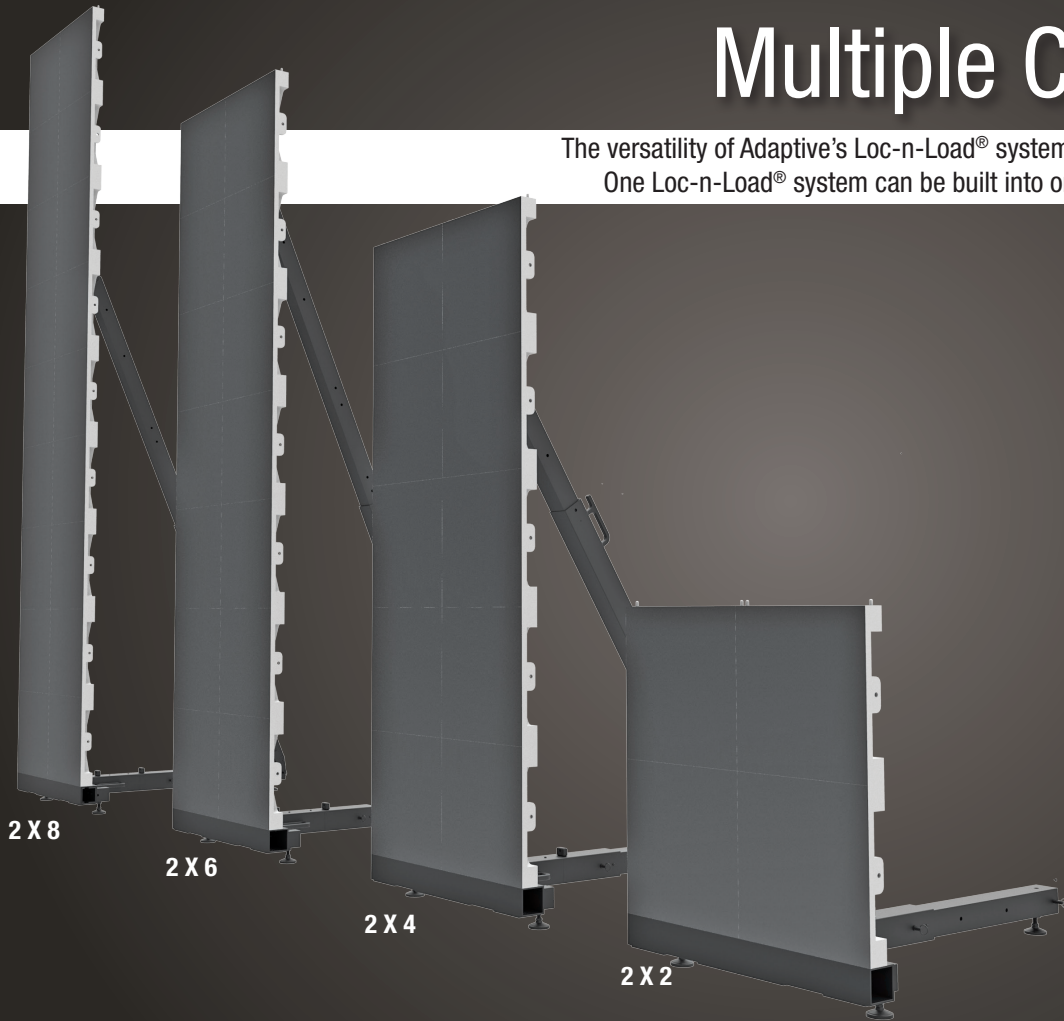
## FEATURES

- Up to 16 x 9 video wall configurations
- Includes Single-column extension
- Fast set ups and dismantling
- Light-weight aluminum construction
- Telescoping dual-column T-Base floor module
- Telescoping Back Brace
- Adjustable floor levelers
- Built-in X and Z axis level indicators
- Rugged black powder coat finish
- Aircraft pins for quick assembly
- Ballast anchor points and tie downs
- Rolling cart with 6" locking casters
- Fits inside delivery truck width-wise
- Optional cart top converts to table
- Easy to use ballast calculator
- Fork Lift Compatible
- Supports 500mm & 500 X 1000mm tiles



# Multiple Configurations

The versatility of Adaptive's Loc-n-Load® system allows installers multiple options for display. One Loc-n-Load® system can be built into one large wall or configured into smaller walls.



## Telescoping Components

The Loc-n-Load® interlocking ground support system has three positions that the telescoping T-Base and Back Brace lock in as monitors are added.

After laying down the T-Bases, leveling and locking them together, set up to 5 rows of monitors utilizing the A position. Add a 6th row of monitors and extend the T-Base and Back Brace into the B position. Add a 7th row of monitors and extend the T-Base and Back Brace out to the C position.

Once in the C position you can add an additional 2 rows of monitors for the maximum height of 9 tiles. Additional components are available to extend to 13 tiles high.

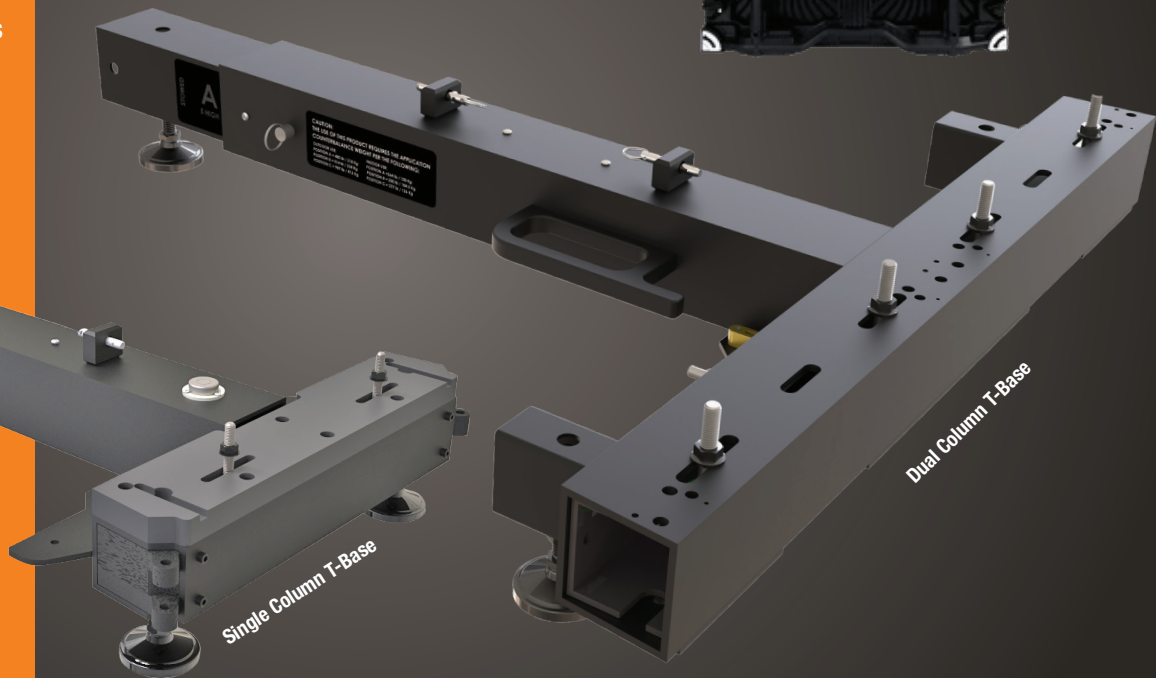
Always load counter balancing ballast when assembling the Loc-n-Load® video walls. Look for the "Load Ballast Here" labels.

# Tile Versatility

With all of the LED Tile models available designers need a versatile system that handles them all. Loc-n-Load® steps to the plate by offering the ability to mount multiple models onto the same base.

Loc-N-Load® components are produced from state-of-the-art precision NC equipment that assures a perfect fit. Its telescoping T-Bases and Back Braces accommodate all 500 X 500 and 500 X 1000 tiles. The only component that is unique are the adapters plates that secure the Back Brace to specific LED tile models.

Loc-N-Load® T-Bases come equipped with adjustable levelers and indicators that allow the installer to get the all the bases aligned and on exactly the same plane, speeding up the assembly time.

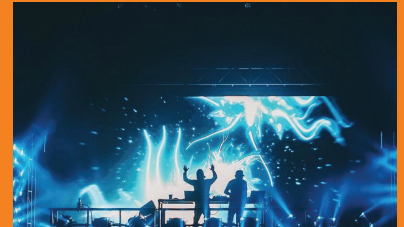


Single Column T-Base

Dual Column T-Base

# Perfect for Live Events

The Loc-n-Load® system is used by some of the most notable event and staging companies. Loc-n-Load® is deployed in convention centers, house of worship, education facilities and other many other venues



# Perfect for Trade Exhibits

The Loc-n-Load® integrates with common exhibit materials, sets up easily and stows away for transport to the next event.



# Perfect for Touring

The Loc-N-Load® system is used and deployed by some of the most notable rental and staging companies at convention centers, hospitality, houses of worship, educational facilities and live shows and events.



# Perfect for Meeting & Conventions

Almost all meetings and conventions rely on visual graphics these days. LED Video Walls get the message across and Loc-n-Load® provides a versatile and stable system that can put video presentations onto any level surface and then arranged into a wide variety of visual configurations.



# More Rental & Staging Solutions

Visit our website or give us a call today to find out about our other highly versatile professional video solutions

## HoverGrid™



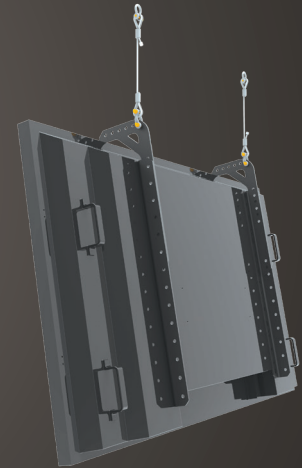
LCD Video Wall Rigging System

## HoverCage™



Modular Projector Rigging System

## HoverPro™



Single LCD Rigging System



**ADAPTIVE**  
TECHNOLOGIES GROUP

---

[adaptivetechnologiesgroup.com](http://adaptivetechnologiesgroup.com) | 562-263-9731