

BC3-8-G

728 lb WLL*

OUTDOOR RATED BEAM CLAMP WITH SWIVEL EYE

BeamWare®



Swiveling Hang Point

CHANNEL STYLE BEAM CLAMP

Adaptive's low-profile channel style beam clamps anchor permanently to structural I-Beams and provide a safe, predictable method for suspending loads from overhead.

The channel style beam clamp is adjustable to beam flange widths ranging from between 3" and 8" (76-203mm). The body of the clamp mounts flush underneath the beam's flange and is equipped with a load-rated swiveling shoulder eye bolt that rotates in the direction of the load to minimize side loading.

Specify this beam clamp for many types of indoor suspensions from horizontally oriented I-Beams, including wire rope assemblies, bridles, rigging chain and other equipment.

A variety of spacers are included in the kits to accommodate beam flange thickness from .1875 to 1.0" (5mm to 25mm) and the only tools that are needed to install the clamp is a 1.0" and a 7/16" hex wrench.



* Steel I-Beams Only

Galvanized for Outdoor Use

KEY FEATURES:

- ▶ Rated for outdoor non-marine applications
- ▶ Single center hang point
- ▶ Provides safe load-rated suspension
- ▶ Secures to beam flanges ranging from 3" - 8" wide

OPTIONAL ACCESSORIES:

- ▶ See Wire Rope Datasheet
- ▶ See Shackle Datasheet
- ▶ See Turnbuckle Datasheet

* Not for human suspension

SPECIFICATIONS:

Material: Structural C-Channel
Finish: Galvanized
Color: Silver
Design Factor: 5:1
WLL: 728 lb/330 kg metal beams
45 Degree WLL 182 lb / 83 kg
Weight: 3.2 lb / 1.45 kg

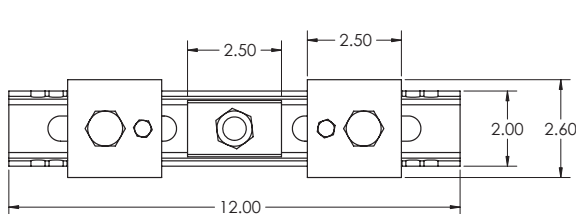
* MAINTAIN LOADS BETWEEN 0° and 45° OFF CENTER

PACKAGE CONTENTS:

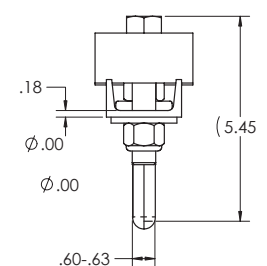
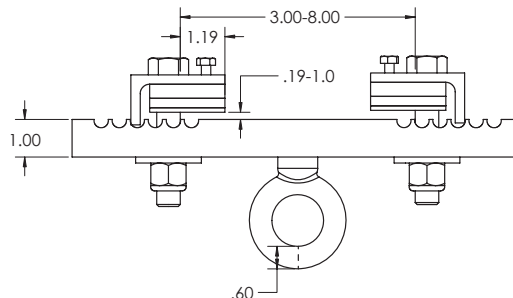
- 1 pc Beam Clamp with Swivel Eye
- 2 pcs Locking Angle Plate
- 2 pcs Flat Washer, 5/8"
- 2 pcs Nyloc Nut, 5/8-11
- Spacers: 3/8", 1/4", 1/8"



Top View



Side View



ALWAYS INSTALL SAFETY CABLES

WARNING: Mounting and/or suspension of equipment requires experienced professionals. Improperly installed equipment can result in property damage, personal injury and/or liability to the installing contractor.

Adaptive Technologies Group
 1635 E. Burnett Street | Signal Hill, CA 90755 USA
 Ph: 562.424.1100 | Fax: 562.424.3520
 www.adaptivetechologiesgroup.com

