

MM-019-BT

75 lb. WLL

PAN & TILT CEILING SPEAKER VESA MOUNT

MULTIMOUNT®



The MM-019-BT is a pan and tilt speaker mount that supports and aims cinema surround speakers equipped with the standard four-point mounting pattern of 2.6 x 2.6" and 1.6 x 1.6".

This mount aims and anchors surround speakers from overhead ceiling mounts and strut by way of ceiling plates, a variety of pipe extensions and strut adapters. Ceiling surrounds achieve up to 360 degrees of horizontal pan angle adjustments and up to 180 degrees of tilt angle adjustment.

Tilt adjustments are made at the side of the speaker adapter plate. Panning adjustments are made at the intersection of the pipe extension coupler and the speaker mount.

The MM-019-BT's pipe coupler provides a pathway for signal wire and a safety cable to pass up through the pipe extension, making for a cosmetically pleasing, safe and predictable method for installing ceiling speakers.



Pipe to Strut Bracket



STANDARD FEATURES:

- ▶ Independent pan and tilt controls
- ▶ Infinite locking adjustments
- ▶ No drift
- ▶ Single man speaker installations

OPTIONAL ACCESSORIES:

- ▶ MP-500NPT-CP Ceiling Mount
- ▶ See Pipe Extensions datasheet
- ▶ See Strut Attachments datasheet

SPECIFICATIONS:

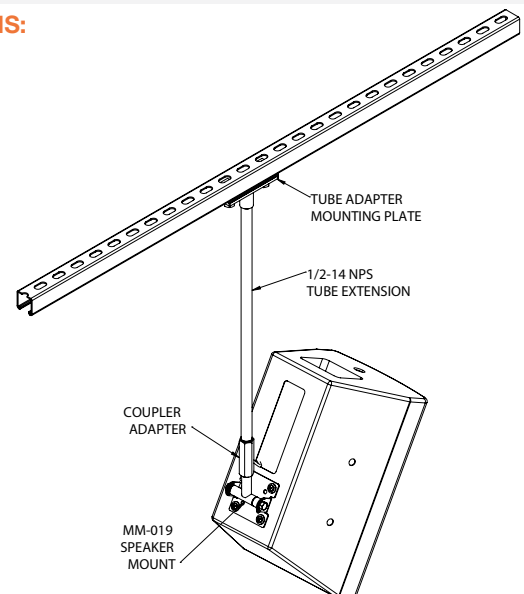
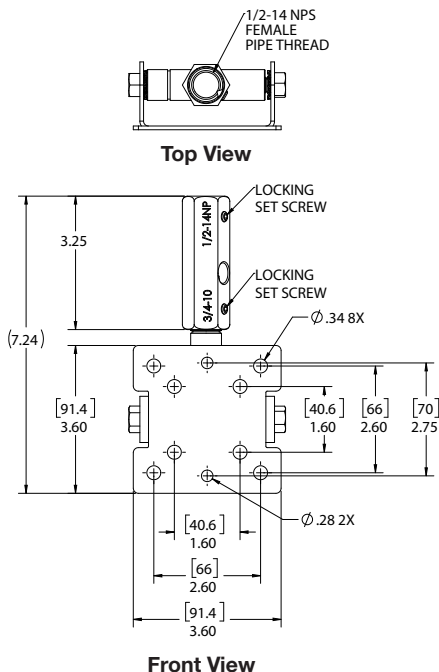
Material: Structural Steel Alloy
Finish: Powder Coat
Tilt Rotation: 180 degrees
Pan Angle: 360 degrees
Color: Black
WLL: 75 lbs. (34.1 Kg) max.
Design Factor: 5:1 ratio
Net WGT: 2.5 Lb (1.14 Kg)
Shipping WGT: 3.5 lb (1.6 Kg)
Pack Count: 1 unit / carton

PACKAGE CONTENTS:

1 pc Speaker Adapter Assy
1 pc Coupler Adapter, 3/4-10 Thread and 1/2NPT



DIMENSIONS:



Adaptive Technologies Group
 1635 E. Burnett Street | Signal Hill, CA 90755 USA
 Ph: 562.424.1100 | Fax: 562.424.3520
 www.adaptivetechologiesgroup.com



ALWAYS INSTALL SAFETY CABLES

WARNING: Mounting and/or suspension of equipment requires experienced professionals. Improperly installed equipment can result in property damage, personal injury and/or liability to the installing contractor.