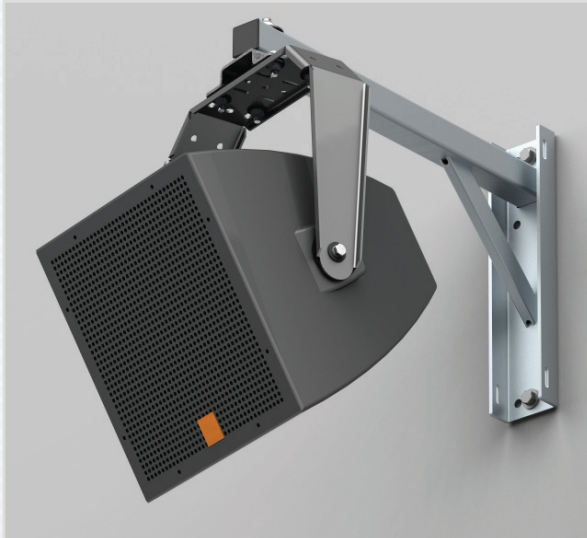


SAS-200-24-SS

(200 lb. WLL)

OUTDOOR MARINE GRADE WALL MOUNT

STEERABLES™



The SAS-200-24-SS is an efficient, outdoor and load-rated universal wall arm system for mounting objects, such as loudspeakers weighing up to 200 lb/91 kg to walls & other vertical structures. Loudspeakers can easily be attached and aimed from walls and other vertical structures by way of a U-bracket or Yoke with ease of installation and flexibility in adjustment.

This all stainless steel assembly is ready to accommodate most stainless Yoke or U-bracket mounts. The SAS-200-24-SS comes with stainless hardware and is ready for marine environments.



Rigid Wall Mount

U-Bracket/Yoke not included.

STANDARD FEATURES:

- ▶ Rated for outdoor, seaside applications
- ▶ Accommodates loudspeaker, stainless Yoke mounts & U-Brackets
- ▶ Mounts to walls and other vertical structural surfaces
- ▶ Significant reductions in installation and planning time
- ▶ Minimal wall surface area required.
- ▶ Accommodates standard Yoke and U-Series assemblies
- ▶ Multiple hang points

OPTIONAL ACCESSORIES:

- ▶ See safety cable datasheet

SPECIFICATIONS:

Material: 304 Stainless Steel

Finish: Passivated

Color: Silver

Design Factor: 7:1 ratio

WLL: 200 lbs. (91 Kg)

Design Factor: 7:1

Net WGT: 16 lbs. (7.3 Kg.) each

Shipping WGT: 18 lbs. (8.2 Kg.)

Pack Count: 1 per carton

PACKAGE CONTENTS:

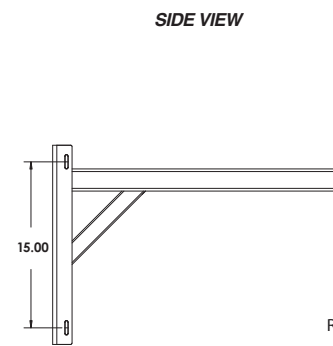
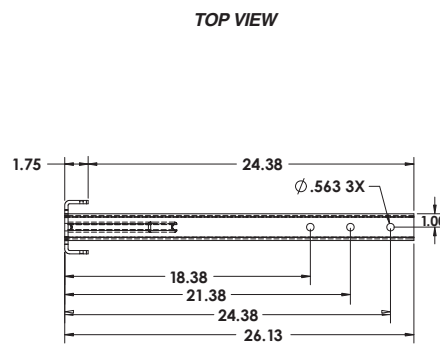
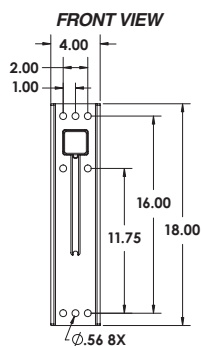
1 pc Wall Arm

1 pc Hardware Kit

Hardware for mounting to wall structure is not included.

U-Bracket/Yoke not included.

DIMENSIONS



Rated for marine environment.

ALWAYS INSTALL SAFETY CABLES

WARNING: Mounting and/or suspension of audio and video equipment requires experienced professionals. Improperly installed loudspeakers can result in property damage, personal injury and/or liability to the installing contractor.