

# BC12-18-GE

# 2000 lb WLL

## LOW PROFILE BEAM CLAMP WITH GIMBALED EYE

## BeamWare®



20° Gimbaled Hang Point

### GIMBALED BEAM CLAMP

Standard, pre-engineered channel style beam clamps anchor to a building's beam structure to provide a safe and predictable method of rigging grids, clusters, arrays and other objects.

The Gimbaled Style beam clamp is unique in that it offers a gimbaled swivel eye that accommodates up to 20 degrees of off-axis side loading in any direction without losing any of its working load.

The gimbal feature is especially predictable when bridling suspended objects from wire rope, rigging chain, span sets, etc.

The body of the clamp mounts flush underneath the building's I-beams and adjusts to accommodate beam flange widths between 12" and 18"



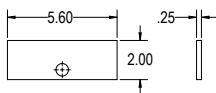
### STANDARD FEATURES:

- ▶ Accommodates beam flanges up to 2" thick
- ▶ Flange spacers included
- ▶ Gimbaled hang point swivels 360°
- ▶ Same WLL from 0°-20°
- ▶ Wide body provides extra clamping stability.
- ▶ Non-loosening fasteners

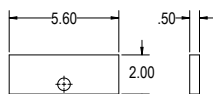
### OPTIONAL ACCESSORIES:

- ▶ See Wire Rope Datasheet
- ▶ See Rigging Components Datasheet

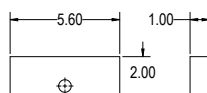
\* Not for human suspension



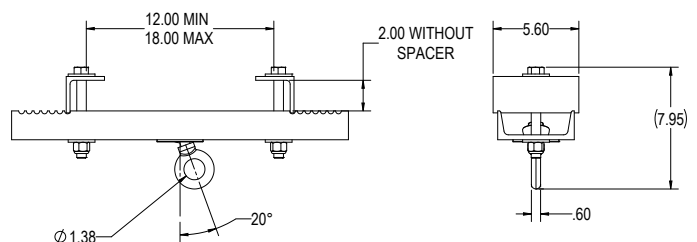
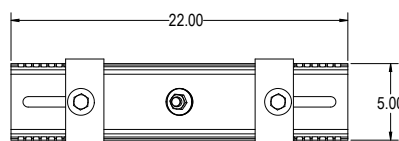
1/4" THICK SPACER



1/2" THICK SPACER



1" THICK SPACER



### SPECIFICATIONS:

**Part Number:** BC12-18-GE

**Materials:** Alloy Steel Components

**Width:** 12" to 18" / 305mm to 457mm

**Color:** Black

**Design Factor:** 5:1

**Vertical WLL\*:** 2000 lbs / 908 Kg. WLL

**20 DEG. WL:** 2000 lbs / 908 Kg. WLL

**45 DEG. WL:** 1200 lbs / 545 Kg.

\* WLL = Working Load Limit

### PACKAGE CONTENTS:

**1 pc** 22" Channel with Swivel Ball

**2 pcs** Angle Lock Bracket

**1 pc** Eyebolt, 5/8"

**2 pcs** 1/4" spacer

**2 pcs** 1/2" spacer

**2 pcs** 1.00" spacer

**1 pc** Assembly Hardware Kit



Rated for indoor use.

**Adaptive Technologies Group**  
1635 E. Burnett Street | Signal Hill, CA 90755 USA  
Ph: 562.424.1100 | Fax: 562.424.3520  
www.adaptivetechologiesgroup.com



### ALWAYS INSTALL SAFETY CABLES

**WARNING:** Mounting and/or suspension of equipment requires experienced professionals. Improperly installed equipment can result in property damage, personal injury and/or liability to the installing contractor.