

# BC3-8

# 728 lb WLL\*

## LOW PROFILE BEAM CLAMP WITH SWIVEL EYE

## BeamWare®



Swiveling Hang Point

### CHANNEL STYLE BEAM CLAMP

Adaptive's low-profile channel style beam clamps anchor permanently to structural I-Beams and provide a safe, predictable method for suspending loads from overhead.

The channel style beam clamp is adjustable to beam flange widths ranging from between 3" and 8" (76-203mm). The body of the clamp mounts flush underneath the beam's flange and is equipped with a load-rated swiveling shoulder eye bolt that rotates in the direction of the load to minimize side loading.

Specify this beam clamp for many types of indoor suspensions from horizontally oriented I-Beams, including wire rope assemblies, bridles, rigging chain and other equipment.

A variety of spacers are included in the kits to accommodate beam flange thickness from .1875 to 1.0" (5mm to 25mm) and the only tools that are needed to install the clamp is a 1.0" and a 7/16" hex wrench.



Wood Beam Adapter  
BC-LAM-KIT

**\* Steel I-Beams Only**

### KEY FEATURES:

- ▶ Single center hang point
- ▶ Provides safe load-rated suspension
- ▶ Secures to beam flanges ranging from 3" - 8"

### OPTIONAL ACCESSORIES:

- ▶ See Rigging Components Datasheet
- ▶ See Gimballed Beam Clamp
- ▶ BC-LAM-KIT for wooden beams

\* Not for human suspension

### SPECIFICATIONS:

**Material:** Structural C-Channel  
**Finish:** Powder Coat  
**Color:** Black  
**Design Factor:** 5:1  
**WLL:** 728 lb/330 kg metal beams  
**45 Degree WLL:** 182 lb / 83 kg  
**WLL:** 300lb / 136kg wood beams  
**Weight:** 3.2 lb / 1.45 kg

**\* DO NOT EXCEED 45° OFF HANG POINT**

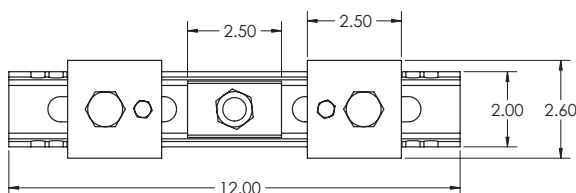
### PACKAGE CONTENTS:

**1 pc** 3"-8" Beam Clamp Channel  
**2 pcs** Locking Angle Plate  
**2 pcs** Flat Washer, 5/8"  
**2 pcs** Nyloc Nut, 5/8-11  
**Spacers:** 3/8", 1/4", 1/8"

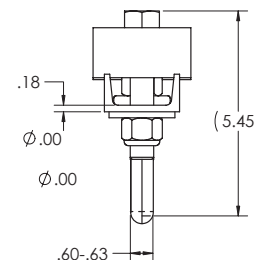
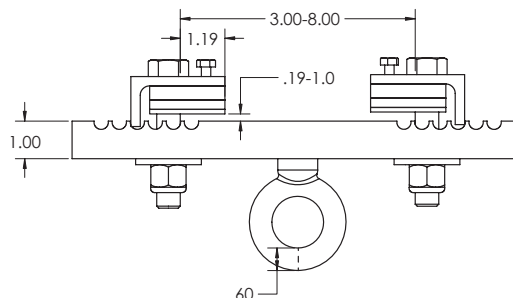


Rated for indoor use.

Top View



Side View



### ALWAYS INSTALL SAFETY CABLES

**WARNING:** Mounting and/or suspension of equipment requires experienced professionals. Improperly installed equipment can result in property damage, personal injury and/or liability to the installing contractor.