

BC7-12-GE

2000 lb WLL

LOW PROFILE BEAM CLAMP WITH GIMBALED EYE

BeamWare®



20° Gimballed Hang Point

GIMBALED BEAM CLAMP

Standard, pre-engineered channel style beam clamps anchor to a building's beam structure to provide a safe and predictable method of rigging grids, clusters, arrays and other objects.

The Gimballed Style beam clamp is unique in that it offers a gimballed swivel eye that accommodates up to 20 degrees of off-axis side loading in any direction without losing any of its working load.

The gimballed feature is especially predictable when bridling suspended objects from wire rope, rigging chain, span sets, etc.

The body of the clamp mounts flush underneath the building's I-beams and side clamps adjust to accommodate beam flange widths between 7" and 12".



STANDARD FEATURES:

- ▶ Accommodates beam flanges up to 2" thick
- ▶ Gimballed hang point swivels 360°
- ▶ Same WLL at hang point from 0° - 20°
- ▶ Wide body provides extra clamping stability
- ▶ Non-loosening fasteners

OPTIONAL ACCESSORIES:

- ▶ See Wire Rope Datasheet
- ▶ See Rigging Components Datasheet

* Not for human suspension

SPECIFICATIONS:

- Materials:** Alloy Steel Components
- Width:** 7" to 12" / 178mm to 305mm
- Color:** Black
- Design Factor:** 5:1
- Vertical WLL*:** 2000 lbs / 908 Kg. WLL (Vertical)
- 20 DEG. WL:** 2000 lbs / 908 Kg. WLL
- 45 DEG. WL:** 1200 lbs / 545 Kg.

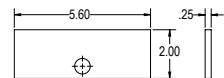
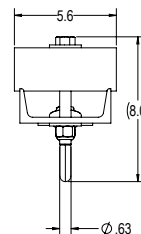
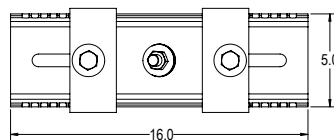
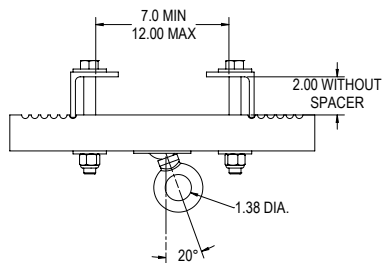
* WLL = Working Load Limit

PACKAGE CONTENTS:

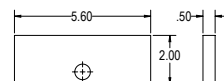
- 1 pc 16" Channel with Swivel Ball
- 2 pcs Lock / Angle Bracket
- 1 pc Eyebolt, 5/8"
- 2 pcs 1/4" spacer
- 2 pcs 1/2" spacer
- 2 pcs 1.00 spacer
- 1 pc Assembly Hardware Kit



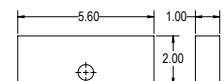
Rated for indoor use.



1/4" THICK SPACER



1/2" THICK SPACER



1" THICK SPACER

Adaptive Technologies Group
 1635 E. Burnett Street | Signal Hill, CA 90755 USA
 Ph: 562.424.1100 | Fax: 562.424.3520
 www.adaptivetechgroup.com



ALWAYS INSTALL SAFETY CABLES

WARNING: Mounting and/or suspension of equipment requires experienced professionals. Improperly installed equipment can result in property damage, personal injury and/or liability to the installing contractor.