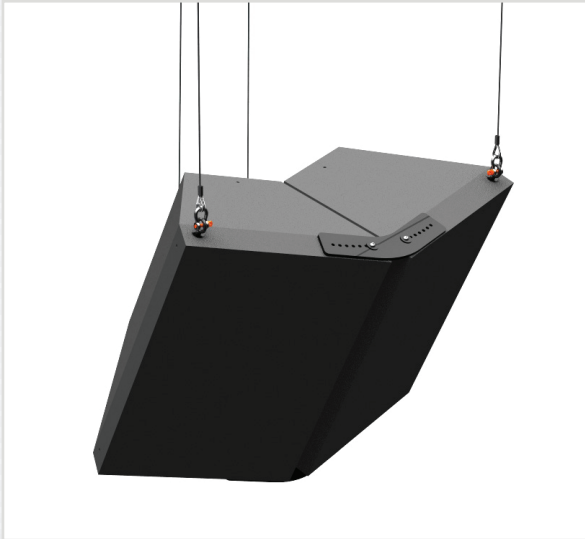


FP-AX 2

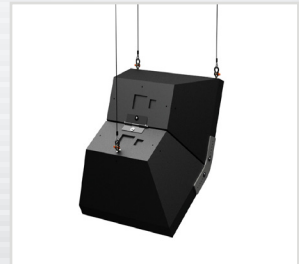
400 lb. WLL

CLUSTER PACK PLANAR ARRAY KIT

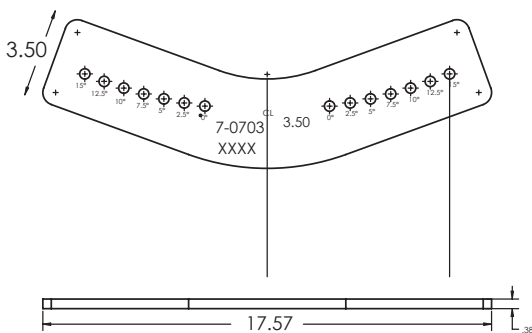
FASPAC™



Clustering and flying AX series loudspeakers is easy, safe and very predictable. This planar array suspension kit joins two AX cabinets together to be flown as one rigid cluster in a horizontal, planar array orientation or in a vertical, line-array fashion. Additional mounting holes allow for splay angles, up to 30 degrees separation to finely tune for specific venues.



TOP-BOTTOM PLATE



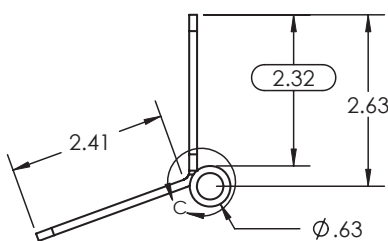
SPECIFICATIONS:

- Material:** Structural Steel
- Finish:** Powder Coat
- Color:** Black
- Design Factor:** 5:1 ratio
- WLL:** 400 lb. / 182 Kg.
- Shipping Weight:** 16.8 lb. / 7.6 Kg.

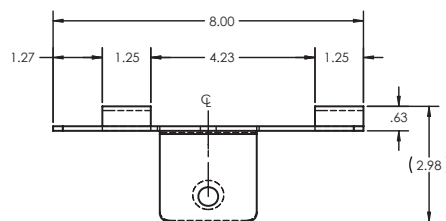
PACKAGE CONTENTS:

- 2pcs** Joiner Plates
- 1pc** Rear Hinge
- 2pcs** Eyebolt, 3/8-16x2.5
- 2pcs** Eyebolt, 3/8-16x1.25
- 1pc** Hardware Kit

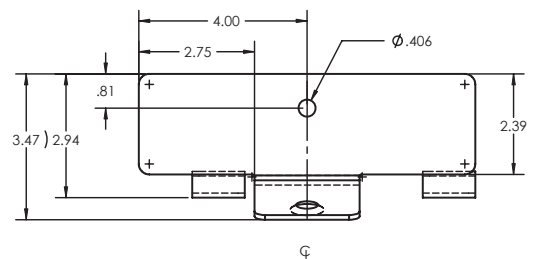
TOP VIEW



REAR HINGE ASSEMBLY



SIDE VIEW



FRONT VIEW

ALWAYS INSTALL SAFETY CABLES

WARNING: Mounting and/or suspension loudspeakers requires experienced professionals. Improperly installed loudspeakers can result in property damage, personal injury and/or liability to the installing contractor.