

# MM-008-CM-BT

20 lb. WLL

## PAN & TILT CEILING SPEAKER MOUNT

MULTIMOUNT®



The MM-008-CM-BT speaker mount attaches loud speakers, weighing up to 20 lbs./9.1 Kg., from ceilings, and other overhead structural surfaces & shapes.

Independent pan and tilt adjustments makes it easier to aim sound into the desired area. A separate feature orients speaker cabinets clockwise 90° into either a horizontal or vertical orientation.

The MM-008-CM-BT adapts to loudspeakers that offer standard single and two hole mounting patterns. It is produced from steel and coated with a weather resistant finish, making this an ideal mount for covered outdoor applications such as under eaves and soffits and other covered outdoor



### STANDARD FEATURES:

- ▶ Weather resistant for covered outdoor & indoor use
- ▶ Separate pan, tilt and clockwise adjustments
- ▶ Mounts speakers to ceilings and under overhangs
- ▶ Accommodates standard single and two hole mounting patterns 2 3/8 & 3"

### OPTIONAL ACCESSORIES:

- ▶ PoleStar® PM-010 pole adapter
- ▶ Safety cables (many standard and custom lengths)

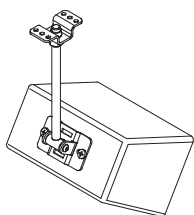
### SPECIFICATIONS:

**Material:** Steel Alloy  
**Finish:** Powder Coat  
**Color:** Black  
**WLL:** 20 lbs. (9.1 Kg) max  
**Design Factor:** 5:1 ratio  
**Net Weight:** 1.9 lbs (.40 Kg)  
**Shipping Weight:** 2 lbs (.9 Kg)  
**Pack Count:** 2 units/carton

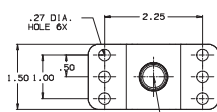
### PACKAGE CONTENTS:

**1 pc** Ceiling Plate  
**1 pc** Speaker Mounting Plate & Arm  
**1 pkg** Assembly Hardware Kit

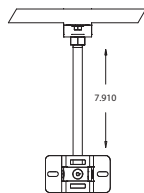
### DIMENSIONS:



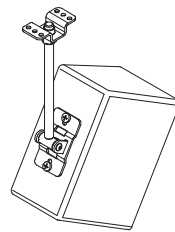
Horizontal Orientation



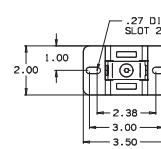
Mounting Plate



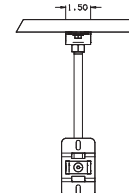
Front View



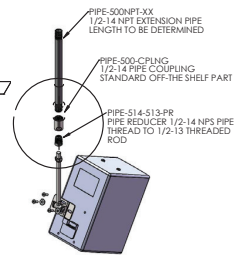
Vertical Orientation



Speaker Adapter Plate



Front View



Pipe Extension