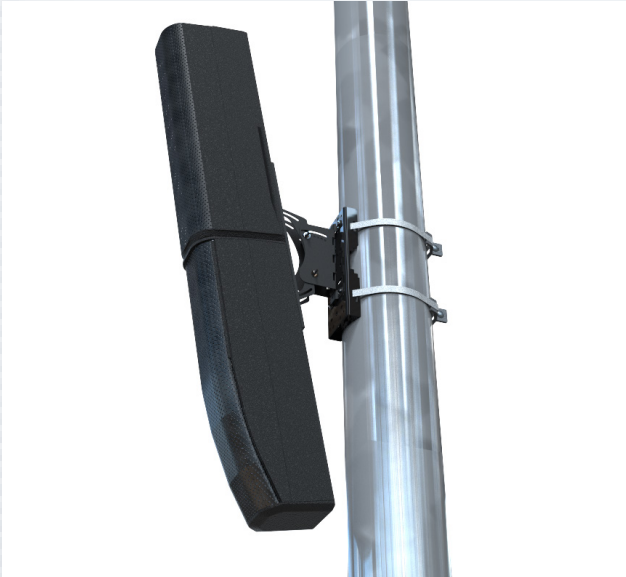


# PM-010

## POLE AND COLUMN ADAPTER

# 100 lb WLL

## PoleStar®



This is a universal pole adapter that adapts the MultiMount and U-Series speaker mounts to poles and columns using stainless steel sign banding.

When mounted vertically, the PoleStar® grips to 6" and larger diameter poles and columns. When mounted horizontally, it grips to 4" and larger diameter poles and columns.

PoleStar is constructed from tough alloy steel to assure reliable permanent installations. It comes in a standard black paint finish over zinc plate undercoating for indoor and outdoor use.

Band kits are available separately. See next page for standard options



### STANDARD FEATURES:

- ▶ Adapts MultiMount speaker mounts to poles and columns.
- ▶ Adapts many U-Series speaker mounts to poles and columns.
- ▶ Adapts SocketMounts to poles and columns.
- ▶ Adapts Steerables wall mounts to pole and columns.
- ▶ Zinc plate undercoating for weather resistance.
- ▶ Adapts paging horns and cameras
- ▶ Universal hole pattern fits many yoke mounts, speaker mounts and U-Brackets.

### OPTIONAL ACCESSORIES:

- ▶ (see next page)

### SPECIFICATIONS:

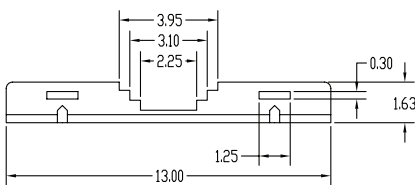
- Material:** Structural steel alloy
- Finish:** Powder coat paint over zinc plate
- Color:** Black powder coat
- WLL:** 100 lbs./ 45.5 kg. total accumulated load
- Design Factor:** 7:1 ratio
- Net Weight:** 3 lbs./1.4 kg.
- Shipping Weight:** 4 lbs./1.8 kg.
- 1 Carton:** 4 lbs./1.8 kg

\*WLL = Working Load Limit

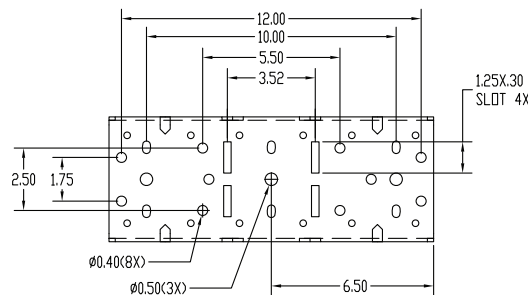
### PACKAGE CONTENTS:

- 1pc** Pole Adapter
- 1pc** Hardware Kit

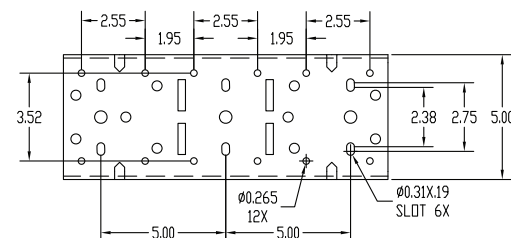
Side View



Top View



Top View



# PM-010

## POLE AND COLUMN ADAPTER

PoleStar®

### TYPES OF INSTALLATIONS:

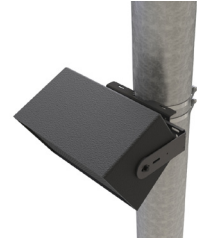
#### U-SERIES INSTALLATION

Most Allen U-Series brackets can be installed vertically and horizontally to the PA-010, which provides one axis of speaker rotation.

**Total load not to exceed 75lbs/34kgs**



Dual Paging Horn installation



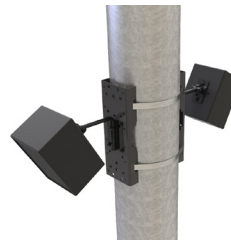
Horizontal U-Series installation with down tilt adjustment

#### MULTIMOUNT™ INSTALLATION

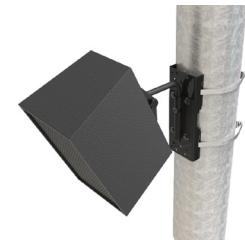
##### SINGLE CABINET

MultiMounts MM-008, MM-016 and MM-022 adapt to the PA-010 Pole Adapter in a vertical orientation for single speaker installations.

**Total load not to exceed 75lbs/34kgs**



MM-008 or MM-016  
Vertical installation with pan and tilt adjustment



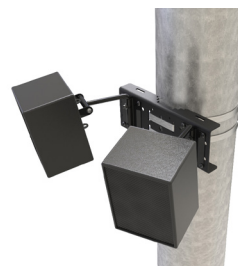
Vertical MM-022 installation with pan and tilt adjustment

#### MULTIMOUNT™ INSTALLATION

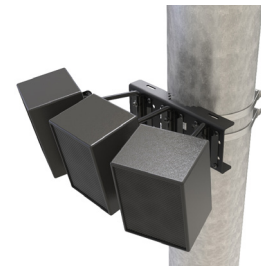
##### ARRAYED PATTERN

Speakers can be arrayed using one, two or three MM-008 or MM-016 MultiMounts in the horizontal orientation. The MultiMount™ can be arrayed up to 360° by placing additional PoleStar® adapters around the pole or column.

**Total load not to exceed 75lbs/34kgs**



Two speaker horizontal array  
MM-008 or MM-016



Three speaker horizontal array  
MM-008 or MM-016

### STANDARD BAND KITS:

#### PM-SB-BAND-30

for 6"/152mm pole diameters and less.

#### PM-SB-BAND-60

for 15"/381mm pole diameters and less.

#### PM-SB-BAND-90

for 25"/635mm pole diameters and less.

#### PM-SB-BAND-120

for 32"/813mm pole diameters and less.

**All band kits include two stainless steel straps and fasteners.**

#### Band Buckle Bolt Kit (Pair)

