

# SAS-500-WM-G

## 500 lb. WLL

### OUTDOOR RATED LINE ARRAY WALL MOUNT

### Steerables®



Galvanized frame

The Steerables Line Array Wall Mount installs and aims line arrays on either side of a stage or building. It's galvanized steel framework assures safe installations and installs permanently. Line Arrays suspend from their own overhead rigging points, which allows for the desired tilt angle. Pan angles, up to 45 degrees left or right are achieved by way of an upper cross arm to aim the line array into the desired angle. An indoor version, the SAS-500-WM, comes in a rugged powder coat black finish.



#### STANDARD FEATURES:

- ▶ Non Marine Outdoor Rated
- ▶ Permanently supports small & mid-size line arrays
- ▶ Easy installation – goes up in minutes
- ▶ Provides up to 45 degrees of pan angle
- ▶ Utilizes the Line Array's grid for down tilt
- ▶ Rugged black powder coat finish

#### OPTIONAL ACCESSORIES:

- ▶ See overhead hardware data sheet
- ▶ See wire rope data sheet
- ▶ See safety cable data sheet

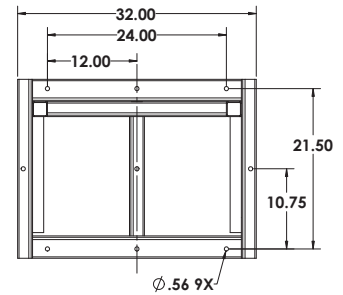
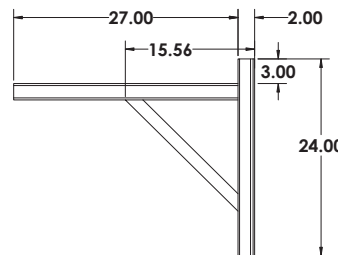
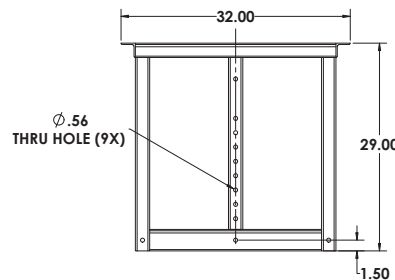
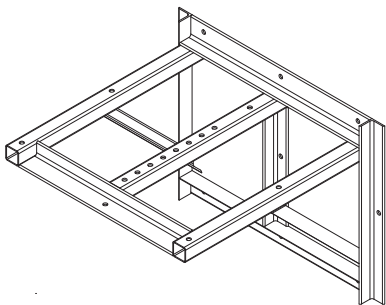
#### SPECIFICATIONS:

**Materials:** Structural alloy steel shapes  
**Finish:** Galvanized  
**Color:** Silver  
**Pan Angle:** Up to +/- 45 degrees  
**Tilt Angle:** See line array specifications  
**WLL:** 500 lb./227 Kg  
**Design Factor:** 5:1  
**Product Weight:** 74 lb / 33.6 Kg

#### PACKAGE CONTENTS:

- 1 pc. Steerables Wall Mount Frame
- 1 pc. Cross Arm Kit

#### DIMENSIONS:



MADE IN USA



Rated for outdoor use.

#### ALWAYS INSTALL SAFETY CABLES

**WARNING:** Mounting and/or suspension of audio and video equipment requires experienced professionals. Improperly installed loudspeakers can result in property damage, personal injury and/or liability to the installing contractor.