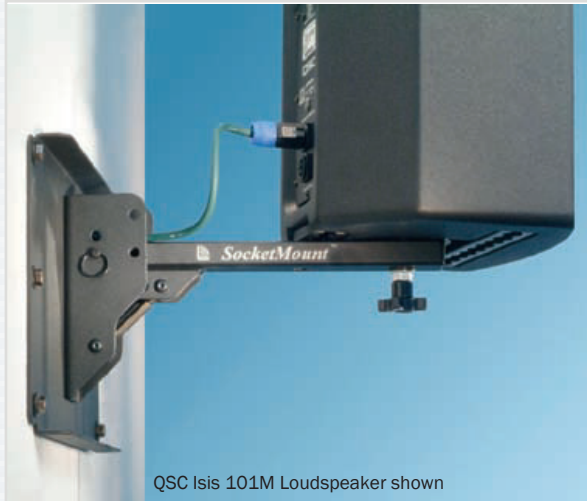


SocketMount™

(50 lb. WLL)

FOR LOUDSPEAKERS WITH POLE SOCKETS

SOCKET MOUNT



QSC Isis 101M Loudspeaker shown

Stowable with pan and tilt adjustments

The Adjustable SocketMount™ mounts and aims loudspeakers that are equipped with pole sockets to walls and other vertical structures. Both pan and tilt rotations are provided for optimum aiming and its support arm folds down when not in use. It's easy on-easy, easy-off feature allows loudspeakers to move to multiple locations such as other SocketMounts™ and tripod stands, thus reducing the need for more loudspeakers and saving floor space.

The SocketMount's unique expandable post assembly fits into the loudspeakers pole socket and, when tightened, locks the speaker onto the arm. An innovative screw drive tilt mechanism provides up to 15 degrees of down angle from the horizontal position while offering 180° of horizontal pan angle.

Three separate positioning points are offered on the arm for optimum spacing between the speaker and the wall. When not in use, the arm is quickly stowed against the wall, making it an ideal mount for both temporary and permanent installations.



Adjusts 15° vertically

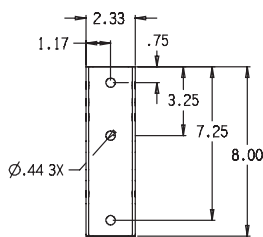
STANDARD FEATURES:

- ▶ Saves floor space
- ▶ Arm stows against wall when not in use
- ▶ Allows speakers to be moved from place to place
- ▶ Independent pan and tilt adjustments
- ▶ Expansion post locks inside of speaker and sets pan angle
- ▶ Post fits standard diameter sockets

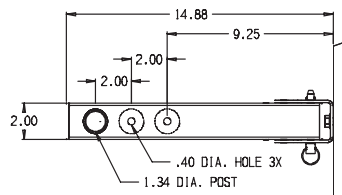
RECOMMENDED OPTIONS:

- ▶ Safety Cables (see data sheet)
- ▶ Wall stud adapter (Part #: WP-16) as shown below
- ▶ PoleStar™ Pole Adapter (Part #: PA-010) as shown below

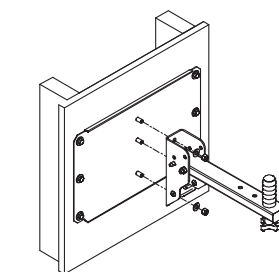
DIMENSIONS:



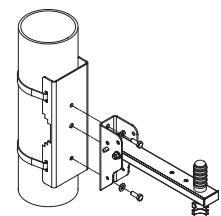
Wall Plate



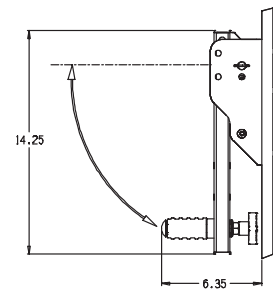
Top View



Side View



Pole Adapter PA-010



Stowed Position



Rated for indoor use.

SPECIFICATIONS:

Materials: Structural steel alloy

Finish: Powder coat

Color: Black and white

Pan rotation: 180° horizontal swivel max.

Tilt rotation: 15° down tilt from horizontal

Working load: 50 lbs. / 23 kg.

Design factor: 10:1 ratio

Net weight: 6 lbs./3 kg.

Shipping weight: 7 lbs./4 kg.

Pack count: 1 unit/carton

ALWAYS INSTALL SAFETY CABLES

WARNING: Mounting and/or suspension of audio and video equipment requires experienced professionals. Improperly installed loudspeakers can result in property damage, personal injury and/or liability to the installing contractor.